



# GMT MONTHLY MEMBERSHIP PROGRESS REPORT

Results as of: 5/31/2019

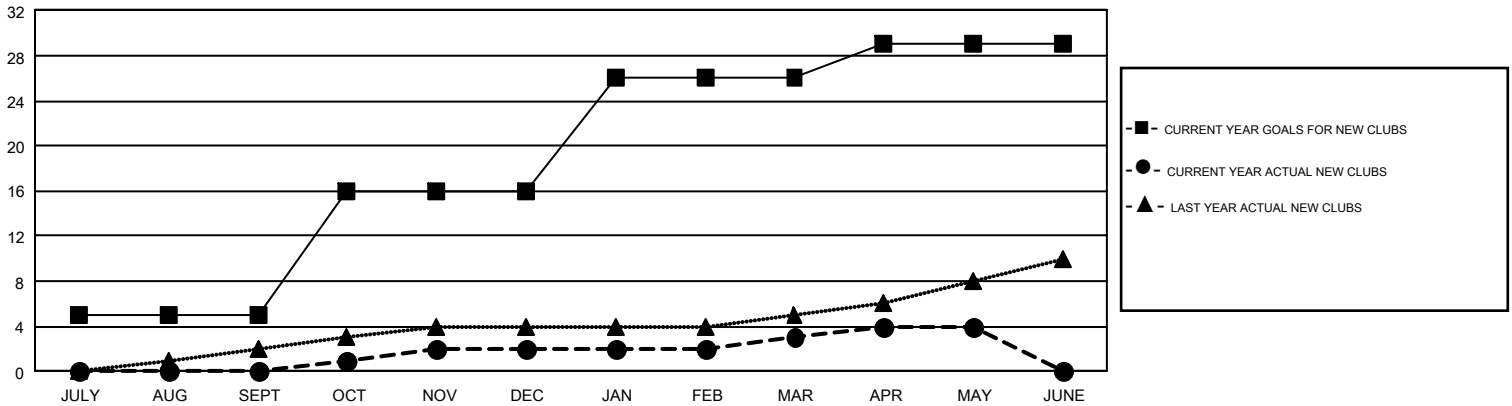
## GMT Constitutional Area 1, Group D

GMT: OPEN

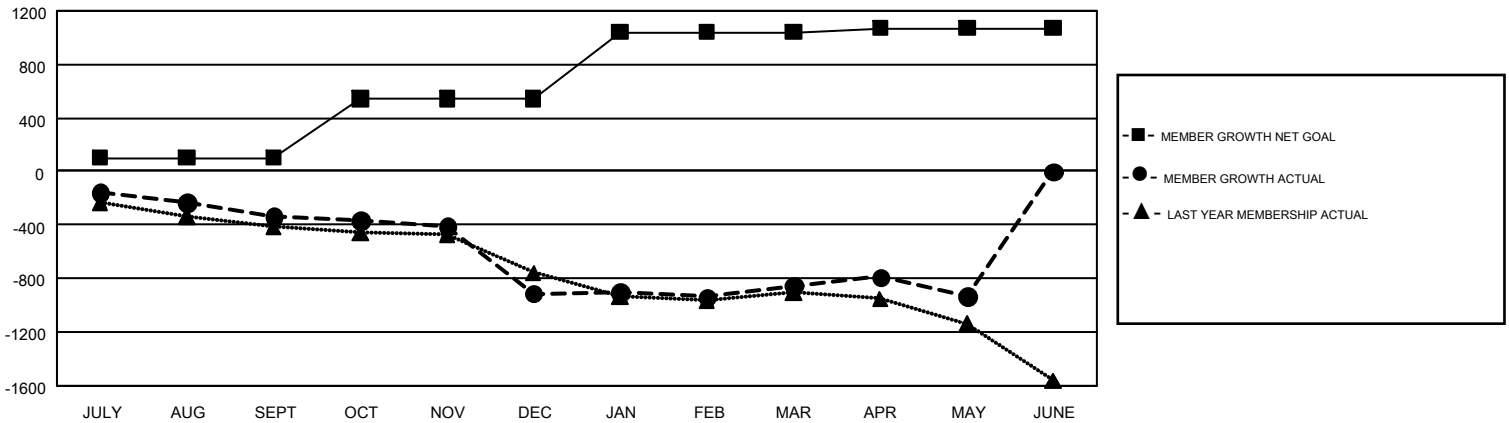
REPORT DOES NOT INCLUDE CLUBS IN UNDISTRICTED AREAS.

Clubs				Members			
RESULTS FOR 2018-2019				RESULTS FOR 2018-2019			
QUARTER	NEW CLUB GOAL	NEW CLUBS	DROPPED CLUBS	QUARTER	MEMBER GROWTH NET GOAL	MEMBER GROWTH ACTUAL	DROPPED MEMBERS ACTUAL (including transfers)
JULY/AUG/SEPT	5	0	12	JULY/AUG/SEPT	101	806	1,024
OCT/NOV/DEC	11	2	7	OCT/NOV/DEC	442	985	1,444
JAN/FEB/MAR	10	1	6	JAN/FEB/MAR	498	971	820
APR/MAY/JUNE	3	1	4	APR/MAY/JUNE	29	636	673

GOALS AND ACTUAL NEW CLUBS CUMULATIVE



GOALS AND ACTUAL MEMBERS CUMULATIVE



DROPPED CLUBS: 29	941 CLUBS OF 1,515 ADDED 1 OR MORE NEW MEMBERS	<u>GENDER DISTRIBUTION</u> MALE            34,317 (73.39%) FEMALE         12,441 (26.61%)
<u>DROPPED MEMBERS</u> DECEASED                    571 CLUB CANCELLED            124 OTHER                         3,265 <hr/> TOTAL                         3,960	<a href="#">CLICK HERE FOR CUMULATIVE MEMBERSHIP DATA</a>	TOTAL FAMILY UNIT MEMBERS                    9,286  FAMILY MEMBERS PAYING HALF DUES                    4,704